

# SNP1 Series

1W Unregulated Single & Dual output

## Features

- SIP7 Package
- Continuous Short Circuit Protection
- 3000 / 6000 VDC Isolation
- Efficiency up to 84%
- Operation Temperature Range -40 ~ 95°C max.
- Non-Conductive Black Plastic Case



## PART NUMBER STRUCTURE

**SNP1** - **24** **15** **S** **H**  
(1) (2) (3) (4) (5)

### (1) Series

### (2) Input Voltage Range

**3R3** - 2.97-3.63 V

**05** - 4.5-5.5 V

**12** - 10.8-13.2 V

**24** - 21.6-26.4 V

### (4) Output Type

**S** - Single Output

**D** - Dual Output

### (3) Output Voltage Range

**3R3** - 3.3 V

**05** - 5 V

**12** - 12 V

**15** - 15 V

### (5) Isolation Voltage

**Blank**- 3000 VDC

**H**- 6000 VDC

**X**- 3000 VDC, refer to  
Pin connections.

SNP1 1W Unregulated Single & Dual output

ALL SPECIFICATIONS ARE TYPICAL AT 25°C, NOMINAL INPUT AND FULL LOAD UNLESS OTHERWISE NOTED

Model Number	Input Voltage Range (VDC)	Input Current		Output Voltage (VDC)	Output Current Full Load (mA)	Efficiency @FL(%)	Capacitive Load (µF, max.)
		No-Load (mA), max.	Full Load (mA), typ.				
SNP1-3R33R3S	2.97-3.63	55	393.55	3.3	303	77	3300
SNP1-3R305S	2.97-3.63	55	383.58	5	200	79	2200
SNP1-3R312S	2.97-3.63	70	369.55	12	83.3	82	470
SNP1-3R315S	2.97-3.63	85	388.46	15	66.6	78	470
SNP1-053R3S	4.5-5.5	40	259.71	3.3	303	77	3300
SNP1-0505S	4.5-5.5	35	246.91	5	200	81	2200
SNP1-0512S	4.5-5.5	45	243.90	12	83.3	82	470
SNP1-0515S	4.5-5.5	55	243.88	15	66.6	82	470
SNP1-123R3S	10.8-13.2	20	105.47	3.3	303	79	3300
SNP1-1205S	10.8-13.2	25	102.88	5	200	81	2200
SNP1-1212S	10.8-13.2	30	102.88	12	83.3	81	470
SNP1-1215S	10.8-13.2	35	105.47	15	66.6	79	470
SNP1-243R3S	21.6-26.4	15	53.41	3.3	303	78	3300
SNP1-2405S	21.6-26.4	15	50.81	5	200	82	2200
SNP1-2412S	21.6-26.4	15	49.60	12	83.3	84	470
SNP1-2415S	21.6-26.4	20	50.81	15	66.6	82	470
SNP1-3R33R3D	2.97-3.63	60	393.55	±3.3	±151.5	77	±1680
SNP1-3R305D	2.97-3.63	70	388.50	±5	±100	78	±1000
SNP1-3R312D	2.97-3.63	75	393.54	±12	±41.6	77	±220
SNP1-3R315D	2.97-3.63	75	388.50	±15	±33.3	78	±220
SNP1-053R3D	4.5-5.5	40	256.41	±3.3	±151.5	78	±1680
SNP1-0505D	4.5-5.5	40	246.91	±5	±100	81	±1000
SNP1-0512D	4.5-5.5	45	253.16	±12	±41.6	79	±220
SNP1-0515D	4.5-5.5	45	256.41	±15	±33.3	78	±220
SNP1-123R3D	10.8-13.2	25	104.17	±3.3	±151.5	80	±1680
SNP1-1205D	10.8-13.2	25	101.63	±5	±100	82	±1000
SNP1-1212D	10.8-13.2	30	105.48	±12	±41.6	79	±220
SNP1-1215D	10.8-13.2	25	101.63	±15	±33.3	82	±220
SNP1-243R3D	21.6-26.4	15	52.08	±3.3	±151.5	80	±1680
SNP1-2405D	21.6-26.4	15	50.81	±5	±100	82	±1000
SNP1-2412D	21.6-26.4	20	53.42	±12	±41.6	78	±220
SNP1-2415D	21.6-26.4	15	54.11	±15	±33.3	77	±220

SNP1 1W Unregulated Single & Dual output

INPUT SPECIFICATIONS					
Parameter	Conditions	Min.	Typ.	Max.	Unit
Input Voltage Range	3.3 V Input	2.97	3.3	3.63	VDC
	5 V Input	4.5	5	5.5	
	12 V Input	10.8	12	13.2	
	24 V Input	21.6	24	26.4	
Input Filter		Capacitor			
Input Reflected Ripple Current (1)			20		mApk-pk
Start up Time	Nominal Vin and constant resistive load			10	ms
Recommended input fuse ( slow blow )	3.3 V Input	1			A
	05 V Input	0.5			
	12 V Input	0.25			
	24 V Input	0.1			
Note :					
1. Measured with a simulated source inductance of 12μH and a source capacitor Cin( 47μF, ESR<1.0Ω at 100kHz ).					

OUTPUT SPECIFICATIONS					
Parameter	Conditions	Min.	Typ.	Max.	Unit
Output Voltage Accuracy	Nominal Vin	-3.0		+3.0	%
Line Regulation	For 1% Vin Change	-1.2		+1.2	%
Load Regulation	From 10% to 100% Load	3.3V Input, 053R3S/D, 0505S/D, 0515D		15	%
		The others		10	
	From 0% to 100% Load		35		
Cross Regulation	Asymmetrical Load 25% / 100% for Dual Output	3.3V, 5V Input	-6	+6	%
		12V, 24V Input	-4	+4	
Ripple & Noise (1)	20MHz bandwidth			150	mVpk-pk
Short Circuit Protection		Continuous and automatic recovery			
Temperature Coefficient		-0.02		+0.02	%/°C
Maximum Capacitive Load	Nominal Vin and constant resistive load	See Table			
Note.					
1. Measured with a 0.1μF MLCC.					

ABSOLUTE MAXIMUM RATINGS					
Parameter	Conditions	Min.	Typ.	Max.	Unit
Input Surge Voltage ( 100 ms )	3.3 V Input			6	VDC
	5 V Input			9	
	12 V Input			18	
	24 V Input			30	
Soldering Temperature	1.5mm from case 10sec max.			260	°C
Note : These are stress ratings. Exposure of devices to any of these conditions may adversely affect long-term reliability.					

SNP1 1W Unregulated Single & Dual output

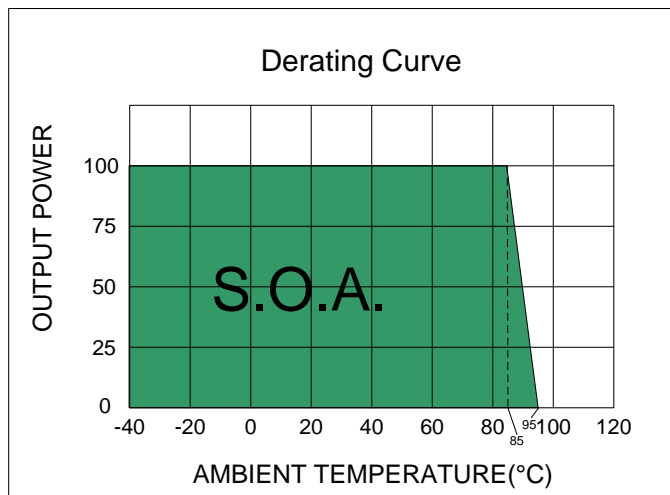
GENERAL SPECIFICATIONS					
Parameter	Conditions	Min.	Typ.	Max.	Unit
Isolation Voltage	Input-output, and rated for 60sec	The others	3000		VDC
		Suffix "H"	6000		
Isolation Resistance	Input-output	1000			MΩ
Isolation Capacitance	Input-output			65	pF
Switching Frequency			100		kHz
MTBF	MIL-HDBK-217 F @ 25°C	2.5			M hours
Safety Standard	IEC / EN / UL 62368-1	Designed to meet			
Environmental compliance		RoHS			

ENVIRONMENT SPECIFICATIONS					
Parameter	Conditions	Min.	Typ.	Max.	Unit
Operating Ambient Temperature	See the Derating Curve	-40		95	°C
Maximum Case Temperature				115	°C
Thermal Impedance		45			°C/W
Storage Humidity				95	% rel. H
Storage Temperature		-55		125	°C
Cooling	Natural Convection	30-65 LFM			

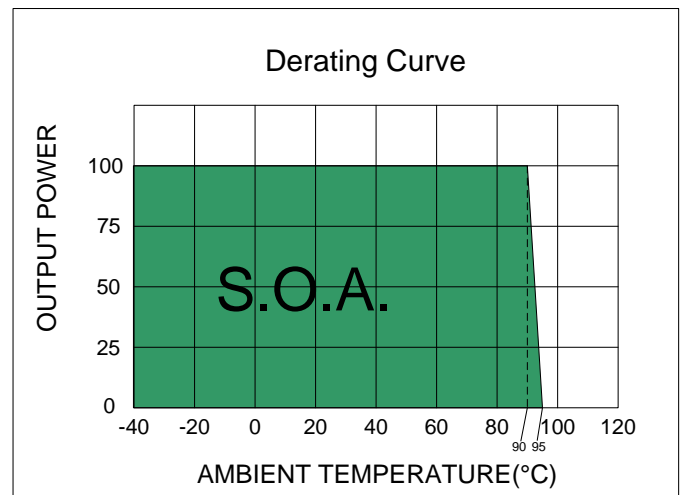
EMC SPECIFICATIONS			
Parameter	Standard	Condition	Perf. Criteria
Conducted Emissions	EN55032	with external components	B
Radiated Emissions	EN55032		B
ESD	IEC 61000-4-2	Air: ±15kV / Indirect: ±8kV	A
RS	IEC 61000-4-3	10V/m	A
EFT	IEC 61000-4-4	±2kV with external components	A
Surge	IEC 61000-4-5	±2kV with external components	A
CS	IEC 61000-4-6	10Vrms	A
PFMF	IEC 61000-4-8	100A/m	A

PHYSICAL SPECIFICATIONS	
Parameter	Value
Case Material	Nonconductive Black Plastic ( UL94V-0 rated )
Pin Material	Tinned Copper
Potting Material	Silicone ( UL94V-0 rated )
Weight	2.3 g, typ.
Dimensions	0.76" x 0.24" x 0.39"

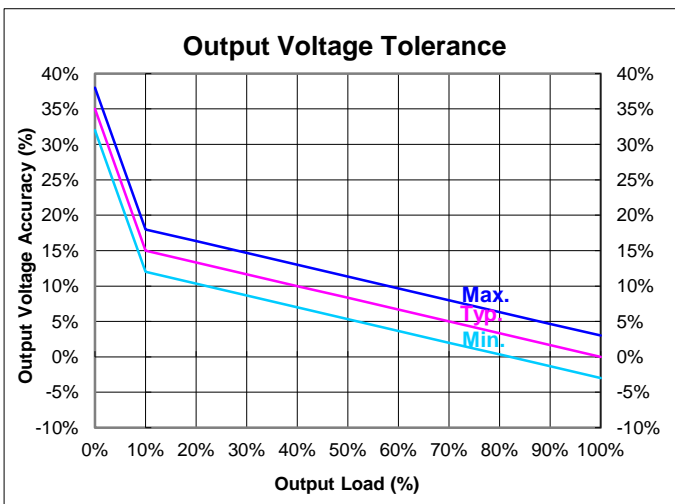
**ELECTRICAL CHARACTERISTIC CURVES**



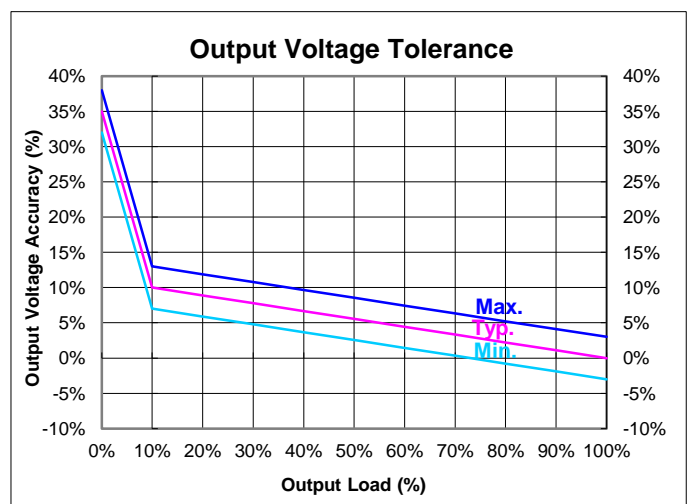
24V input



The others



3.3V input, 053R3S/D, 0505S/D, 0515D

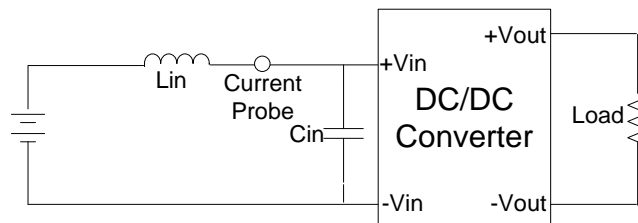


The others

**TEST CONFIGURATIONS**

**Input Reflected Ripple Current Test Step**

Input reflected ripple current is measured with a source inductor  $L_{in}$  ( $12\mu H$ ) and a source capacitor  $C_{in}$  ( $47\mu F$ ,  $ESR < 1.0\Omega$  at  $100kHz$ ) at nominal input and full load.



**DESIGN & FEATURE CONFIGURATIONS**

**Isolation Voltage**

This series is designed to meet the functional insulation of UL, both input and output should be maintained within SELV limits (less than 42.4V peak, or 60VDC).

The isolation test voltage represents a measure of immunity to transient voltages and the part should never be used as an element of a safety isolation system. The part could be expected to function correctly with hundreds of volts offset applied continuously across the isolation barrier; but then the circuitry on both sides of the barrier must be regarded as operating at an unsafe voltage and further isolation/insulation systems must form a barrier between these circuits and any user-accessible circuitry according to safety standard requirements.

**Repeated High-Voltage Isolation Testing**

Repeated high-voltage isolation testing of a barrier component can actually degrade isolation capability, to a lesser or greater degree depending on materials, construction and environment.

This series has isolation transformers without additional insulation between primary and secondary windings of enameled wire.

While parts can be expected to withstand several times the stated test voltage, the isolation capability does depend on the wire insulation.

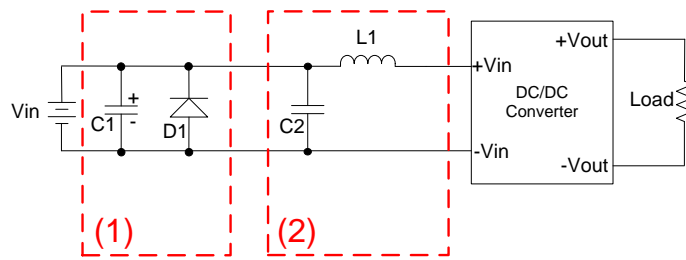
Any material including the enamel (typically polyurethane) is susceptible to eventual chemical degradation when subject to very high applied voltage, thus implying that the number of tests should be strictly limited.

We strongly advise against repeated high voltage isolation testing, but if it is absolutely required, the isolation test voltage should be reduced by 20% from specified test voltage.

**DESIGN & FEATURE CONFIGURATIONS**

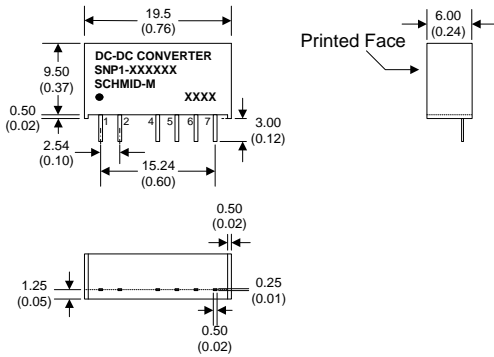
**EMC Filter**

The part (1) Circuit is used to meet Surge & EFT test, and the part (2) Circuit is used to meet EMI test.



Vin	C1	D1	C2	L1
3.3V	NIPPON Chemi-con KY series 470µF / 100V	SMDJ6.0A	MLCC 10µF / 50V	10µH
5V	NIPPON Chemi-con KY series 470µF / 100V	SMDJ9.0A	MLCC 10µF / 50V	10µH
12V	NIPPON Chemi-con KY series 470µF / 100V	SMDJ18.0A	MLCC 10µF / 50V	10µH
24V	NIPPON Chemi-con KY series 680µF / 100V	SMDJ30.0A	MLCC 10µF / 50V	10µH

## MECHANICAL SPECIFICATIONS



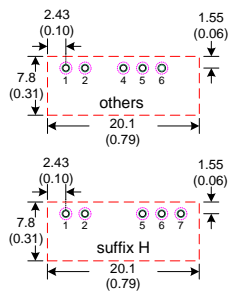
## PIN CONNECTIONS

PIN NUMBER	SINGLE SINGLE-H	DUAL DUAL-H	SINGLE-X	DUAL-X
1	+Vin	+Vin	+Vin	+Vin
2	-Vin	-Vin	-Vin	-Vin
4	N.P.	N.P.	-Vout	-Vout
5	-Vout	-Vout	N.P.	COM
6	N.P.	COM	+Vout	+Vout
7	+Vout	+Vout	N.P.	N.P.

\*N.P. : No pin.

- Notes : All dimensions are typical in millimeters ( inches ).
1. Pin dimension tolerance :  $\pm 0.05$  (  $\pm 0.002$  )
  2. Pin pitch and length tolerance:  $\pm 0.35$  (  $\pm 0.014$  )
  3. Pin to case tolerance:  $\pm 0.5$  (  $\pm 0.02$  )
  4. Case tolerance:  $\pm 0.5$  (  $\pm 0.02$  )

## RECOMMENDED FOOTPRINT



- Notes : All dimensions are typical in millimeters ( inches ).
1. Through hole 1,2,4,5,6,7 :  $\varnothing 0.8$  (0.031)
  2. Top view pad 1,2,4,5,6,7 :  $\varnothing 1.0$  (0.039)
  3. bottom view pad 1,2,4,5,6,7 :  $\varnothing 1.6$  (0.063)