

SMD Power Coil

SPRH Series

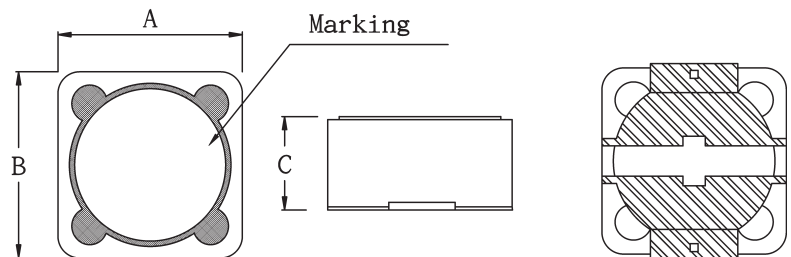


FEATURES

- ◆ SPRH series is superior to be high saturation for surface mounting
- ◆ Magnetic shielding
- ◆ Very small footprint
- ◆ Flat-top for pick and place
- ◆ Increased size selection guide
- ◆ Low resistance to keep power loss minimum

APPLICATIONS

- ◆ Ideal for palm-top and laptop
- ◆ LCD television set
- ◆ Excellent for power line DC to DC converters application used in hard disk, notebook computer

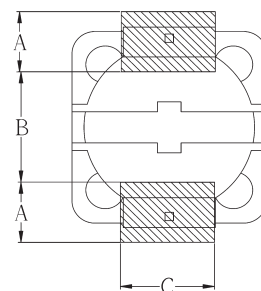


DIMENSIONS (mm)

| No. | Part No. | Size (mm) | | |
|-----|-----------|------------|------------|-----------|
| | | A | B | C |
| 1 | SPRH 0703 | 7.3 ± 0.2 | 7.3 ± 0.2 | 3.2 ± 0.2 |
| 2 | SPRH 0704 | 7.3 ± 0.2 | 7.3 ± 0.2 | 4.5 Max. |
| 3 | SPRH 1205 | 12.0 ± 0.3 | 12.0 ± 0.3 | 6.0 Max. |
| 4 | SPRH 1207 | 12.0 ± 0.3 | 12.0 ± 0.3 | 8.0 Max. |
| 3 | SPRH 1209 | 12.0 ± 0.3 | 12.0 ± 0.3 | 10.0 Max. |

RECOMMENDED PATTERN

| Type | A | B | C |
|-----------|-----|-----|-----|
| SPRH 0703 | 1.5 | 4.8 | 2.2 |
| SPRH 0704 | 1.6 | 4.8 | 2.2 |
| SPRH 1205 | 2.8 | 7.0 | 5.4 |
| SPRH 1207 | 2.9 | 7.0 | 5.4 |
| SPRH 1209 | 2.9 | 7.0 | 5.4 |



PACKAGE

| Type | SPRH 0703 | SPRH 0704 | SPRH 1205 | SPRH 1207 | SPRH 1209 |
|-----------|-----------|-----------|-----------|-----------|-----------|
| Q'TY/Reel | 1,000 | 1,000 | 500 | 500 | 500 |

info@schmid-m.com

SMD Power Coil

SPRH Series



| Part Code | L (μH) | SPRH 0703 | | SPRH 0704 | | SPRH 1205 | | SPRH 1207 | | SPRH 1209 | |
|-----------|--------|-----------|---------|-----------|---------|-----------|---------|-----------|---------|-----------|---------|
| | | RDC (Ω) | IDC (A) | RDC (Ω) | IDC (A) | RDC (Ω) | IDC (A) | RDC (Ω) | IDC (A) | RDC (Ω) | IDC (A) |
| 1R0 | 1.0 | | | | | | | 0.006 | 14.00 | 0.030 | 20.00 |
| 1R3 | 1.3 | | | | | 0.012 | 8.00 | | | | |
| 2R1 | 2.1 | | | | | 0.014 | 7.00 | | | | |
| 2R4 | 2.4 | | | | | | | 0.010 | 10.30 | | |
| 3R1 | 3.1 | | | | | 0.017 | 6.00 | | | | |
| 3R5 | 3.5 | | | | | | | 0.012 | 9.30 | | |
| 4R4 | 4.4 | | | | | 0.020 | 5.00 | | | | |
| 4R6 | 4.6 | | | | | | | 0.014 | 9.10 | | |
| 5R8 | 5.8 | | | | | 0.021 | 4.40 | 0.016 | 8.60 | | |
| 7R4 | 7.4 | | | | | | | 0.018 | 7.40 | | |
| 7R5 | 7.5 | | | | | 0.024 | 4.20 | | | | |
| 100 | 10 | 0.072 | 1.68 | 0.049 | 1.84 | 0.025 | 4.00 | 0.019 | 6.70 | | |
| 120 | 12 | 0.098 | 1.52 | 0.058 | 1.71 | 0.027 | 3.50 | 0.021 | 6.45 | | |
| 150 | 15 | 0.130 | 1.33 | 0.081 | 1.47 | 0.030 | 3.30 | 0.026 | 5.65 | 0.022 | 6.00 |
| 180 | 18 | 0.140 | 1.20 | 0.091 | 1.31 | 0.034 | 3.00 | 0.028 | 5.10 | | |
| 220 | 22 | 0.190 | 1.07 | 0.110 | 1.23 | 0.036 | 2.80 | 0.036 | 4.70 | | |
| 270 | 27 | 0.210 | 0.96 | 0.150 | 1.12 | 0.051 | 2.30 | 0.041 | 4.20 | | |
| 330 | 33 | 0.240 | 0.91 | 0.170 | 0.96 | 0.057 | 2.10 | 0.053 | 3.90 | | |
| 390 | 39 | 0.320 | 0.77 | 0.230 | 0.91 | 0.068 | 2.00 | 0.060 | 3.50 | | |
| 470 | 47 | 0.360 | 0.76 | 0.260 | 0.88 | 0.075 | 1.80 | 0.078 | 3.25 | 0.061 | 4.20 |
| 560 | 56 | 0.470 | 0.68 | 0.350 | 0.75 | 0.110 | 1.70 | 0.090 | 2.90 | | |
| 680 | 68 | 0.520 | 0.61 | 0.380 | 0.69 | 0.120 | 1.50 | 0.120 | 2.60 | 0.885 | 3.00 |
| 820 | 82 | 0.690 | 0.57 | 0.430 | 0.61 | 0.140 | 1.40 | 0.119 | 2.40 | | |
| 101 | 100 | 0.790 | 0.50 | 0.610 | 0.60 | 0.160 | 1.30 | 0.151 | 2.10 | | |
| 121 | 120 | 0.890 | 0.49 | 0.660 | 0.52 | 0.170 | 1.10 | 0.169 | 1.90 | | |
| 151 | 150 | 1.270 | 0.43 | 0.880 | 0.46 | 0.230 | 1.00 | 0.227 | 1.80 | 0.190 | 2.20 |
| 181 | 180 | 1.450 | 0.39 | 0.980 | 0.42 | 0.290 | 0.90 | 0.299 | 1.55 | 0.209 | 2.00 |
| 221 | 220 | 1.650 | 0.35 | 1.170 | 0.36 | 0.400 | 0.80 | 0.338 | 1.45 | 0.290 | 1.60 |
| 271 | 270 | 2.310 | 0.32 | 1.640 | 0.34 | 0.460 | 0.75 | 0.419 | 1.30 | | |
| 331 | 330 | 2.620 | 0.28 | 1.860 | 0.32 | 0.510 | 0.68 | 0.471 | 1.20 | 0.386 | 1.300 |
| 391 | 390 | 2.940 | 0.26 | 2.850 | 0.29 | 0.690 | 0.65 | 0.572 | 1.10 | | |
| 471 | 470 | 4.180 | 0.24 | 3.010 | 0.26 | 0.770 | 0.58 | 0.741 | 1.00 | | |
| 561 | 560 | 4.670 | 0.22 | 3.620 | 0.23 | 0.860 | 0.54 | 0.852 | 0.95 | | |
| 681 | 680 | 5.730 | 0.19 | 4.630 | 0.22 | 1.200 | 0.48 | 1.130 | 0.85 | | |
| 821 | 820 | 6.540 | 0.18 | 5.200 | 0.20 | 1.340 | 0.43 | 1.240 | 0.75 | | |
| 102M | 1000 | 9.440 | 0.16 | 6.000 | 0.18 | 1.530 | 0.40 | 1.500 | 0.70 | | |

DCR & IDC listed are all Max. Value.

Tolerance : M ± 20%, N ± 25% , M tolerance is standard.

****Other Spec. is available to be case by case. Welcome to contact our sales.****

info@schmid-m.com